



Dora Day Drew

A Souvenir of Peeking





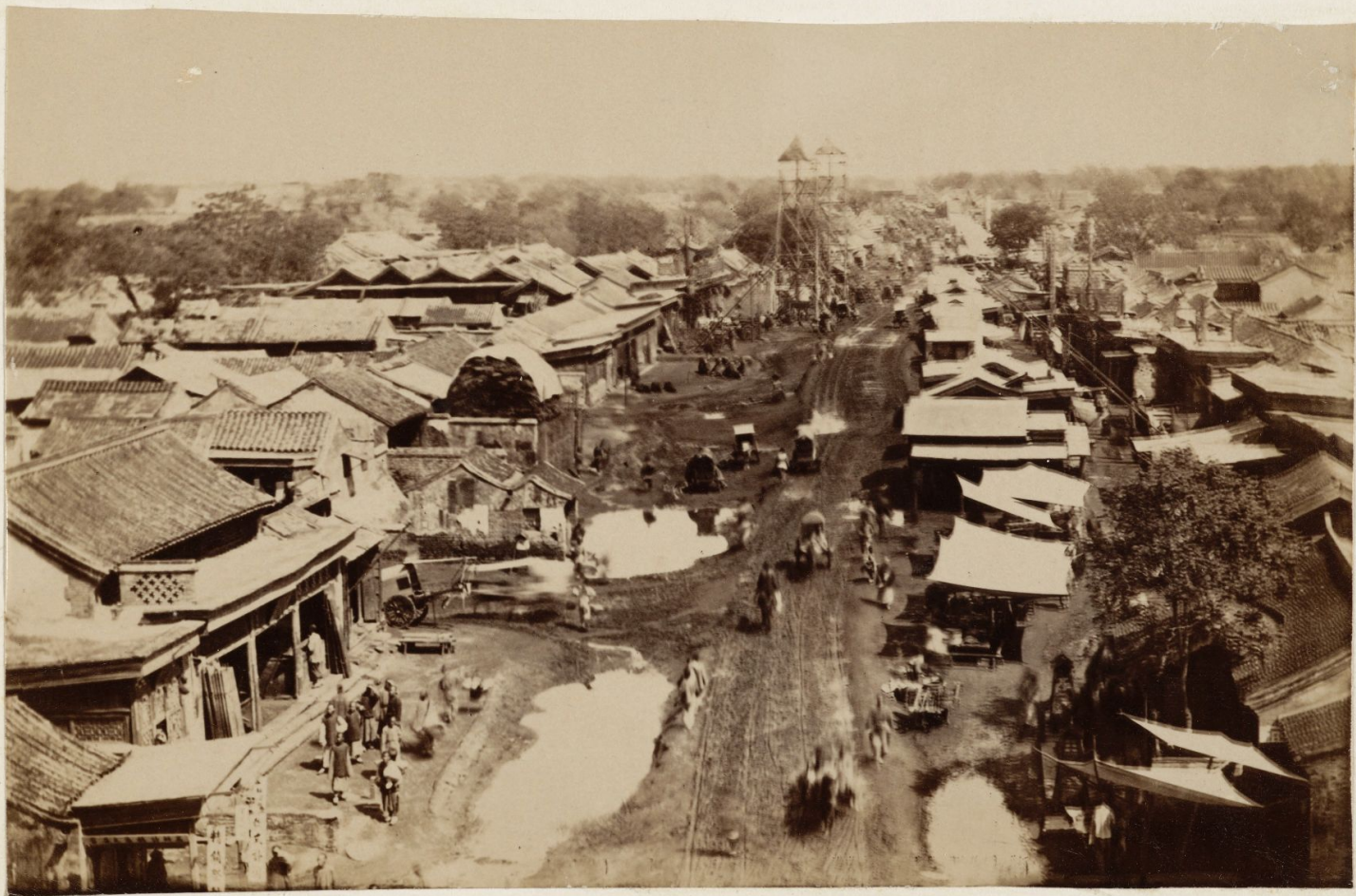
~ Chien Men - Tartar City - Peking ~



~ Entrance to Imperial Palace - Peking ~



~ Imperial Canal and British Legation - Peking ~



~ Street leading to the Hai-Tai Men - Peking ~



~ On Top of the Wall of Peking ~



~ Coal-hill - Imperial City - Peking ~



~ Huang-Ssu or Yellow Temple outside Peking ~





~ Temple - Imperial City - Peking ~



~ Ta-chung-ssû or Bell Temple - Peking ~



~ Gate-way - British Legation - Peking ~



~ Ministers House - British Legation - Peking ~



~ Ministers' House - American Legation - Peking ~



~ Chinese Official Chair ~



~ Membets of the American Legation - Peking ~



~ Chinese covered Cart ~





~ Bridge leading to San-shan-an-ih - Western Hills ~



~ Bridge leading to Ta-pei-ssü - Western Hills ~



~ Bridge leading to Hsiang-chieh-ssü ~  
~ Western Hills ~



~ Hsiang-chieh-ssü - Western Hills ~



~ Entrance to P. Yün - ssü - Western Hills ~



~ Marble Tower - Pi-Yün-ssü ~



~ Temple of Pao-chu-tung - Western Hills ~



~ Bridge at Wan-shao-shan - Summer Palace ~





~ Lodge in the Imperial Hunting Park. ~

~ Western Hills ~



~ The American Legation - Peking ~



~ Chancery Lane - British Legation - Peking ~



~ Idols in the Temple of Hsiang-chieh-ssu - W. Hills ~



~ Members of the British Legation - Peking ~